



GE Druck

Intecal for Industry

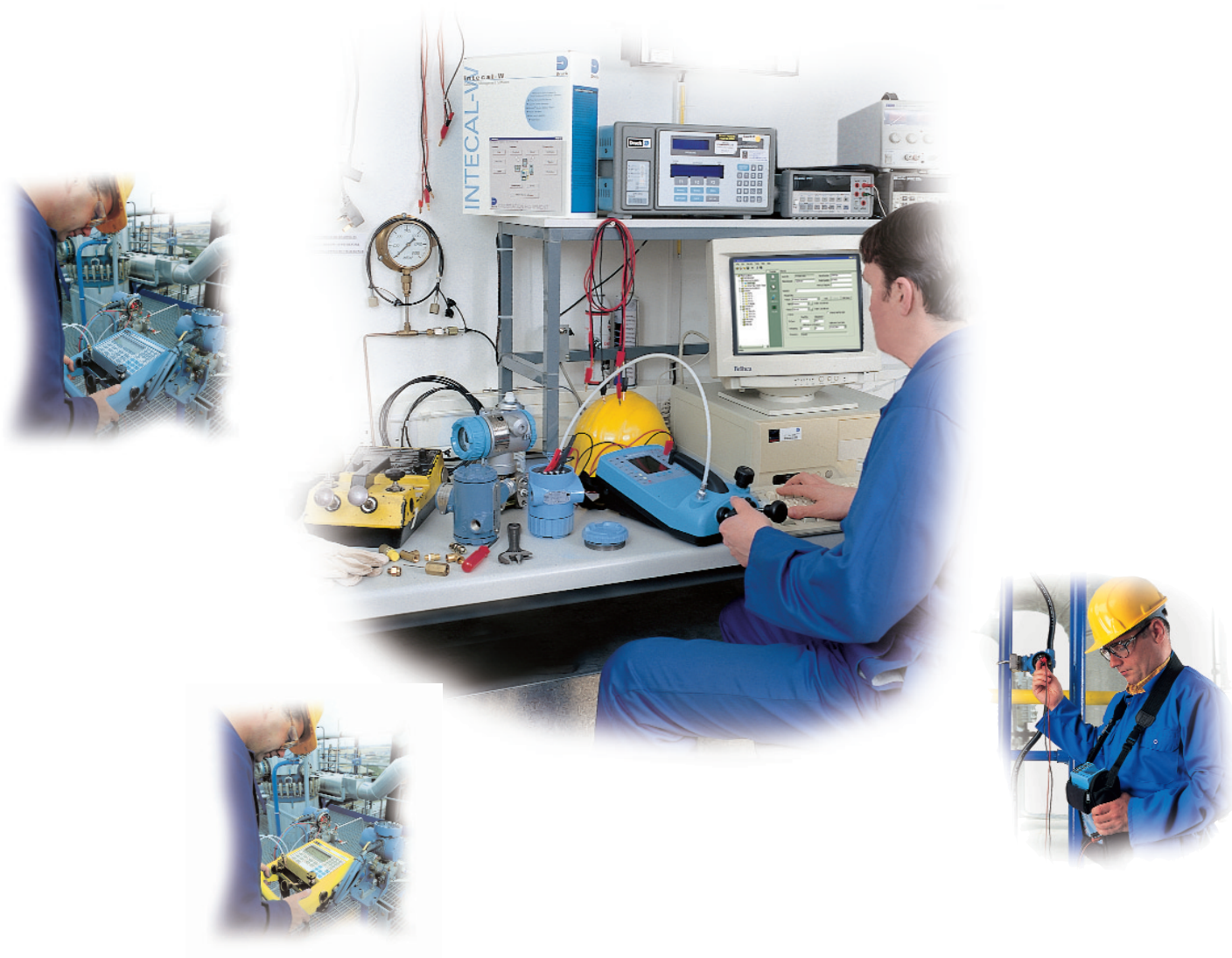
Calibration Software for Portable Calibrators

GE Intecal is a new calibration management software platform developed by GE Druck to maintain & control a calibration environment to the highest standards of metrology. The Intecal for Industry package has been adapted for the process industry especially where portable calibrators are used to validate plant instrumentation.

FREE DOWNLOAD

Of fully functioning 25 tag version at
www.ge-intecal.com

- Windows based software
- Maintenance scheduling utility
- Calibration certificates including custom logo
- Compatible with FCINTF hardware drivers
- Stores instrument details, procedures, results
- Developed to meet ISO, GaMP and FDA requirements



Intecal for Industry

Calibration Software for Portable Calibrators

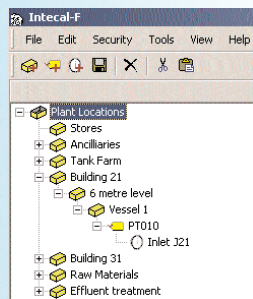
Intecal for Industry is an easy to use Calibration Management software application for generating calibration procedures, scheduling work and documenting results. It has been developed to help meet the increasing demands of GaMP, ISO9000 and FDA.

GE Druck offer the most comprehensive range of pressure and temperature test and calibration equipment; when used with Intecal for Industry significant cost savings can be realised by: -

- Increasing calibration/maintenance productivity
- Optimising product quality
- Minimising production costs
- Reducing the burden of ISO9000, GaMP, FDA, etc
- Reducing documentation time and errors

Database Architecture

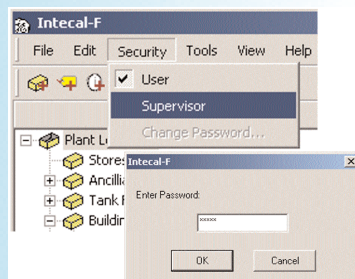
Intecal for Industry uses the popular explorer tree structure to view nested locations. This philosophy is simple to learn and enables Plant Areas and Process Instrumentation to be organised and managed effectively.



System Security

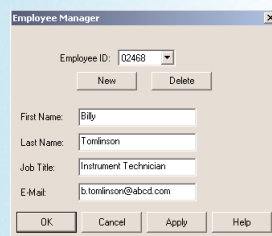
To prevent unauthorised editing of data, Intecal for Industry utilises a 2 tier password protected security system.

Database management is exclusive to the supervisor, whilst the user is permitted to create work orders and transfer data between PC and Field Calibrators.



Employee Manager

Authorised employees are issued with a User ID, this embodies their unique e-signature that is used to invoke calibration procedures and save result files. The employee name is automatically populated on the Calibration Report.

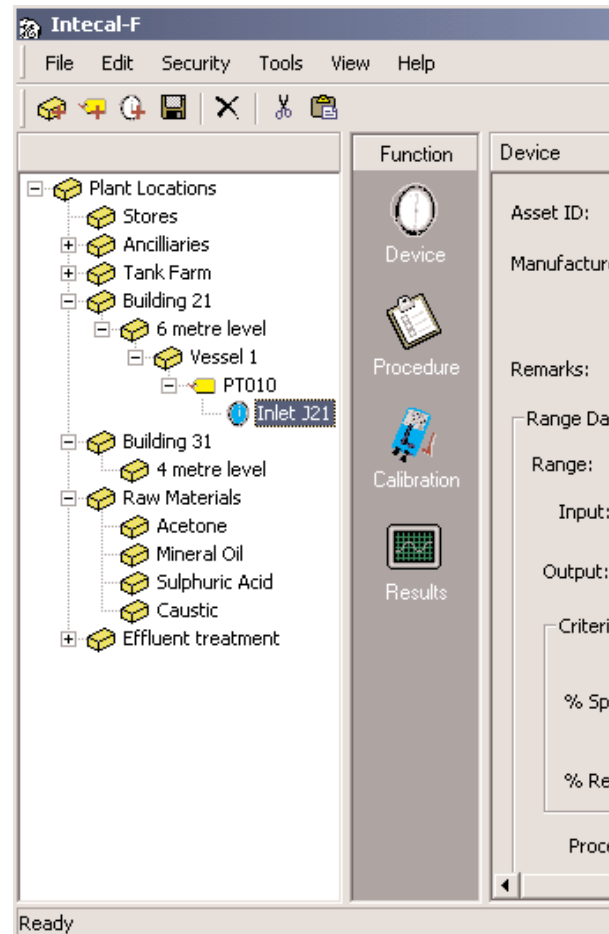


Instrument Records

The 'function' pane is the direct portal to the device database containing the following. Manufacturer, model number and serial number of the instrument, the input and output range data and calibration pass/fail criteria.

Generic test procedures giving Quality uniformity and work orders to assist resource planning.

Archived calibration history and reports, including as found/as left data complete with graphs.



Intecal for Industry

Intecal for Industry provides a

- Simple to use
- Supports Tag numbers and
- Compatible with Druck field
- Manual data entry
- Time based calibration sch
- Historical records
- Export types .pdf, .doc, an
- Supports simple multi-user
- Multi-language version av
- Comprehensive on-line hel



Inlet J21 Serial Number: GSK 12345
 GE Druck Model Number: RTX 1000
 Hook up Diagram: 21-V1-010
 Positioned on J21 gantry, isolation in JB473, F19.

Range 1 Add Delete Edit Name
 Pressure 0.000 - 6.000 bar
 Current 4.000 - 20.000 mA

☐ Output read by User
 Pass/Fail Adjustment
 0.5 0.35
 (Whichever is Greater)
 Calibration Due Date: 24/10/2004
 SOP 0029

Software System

all the features for efficient calibration management:

Asset numbers

calibrators and 3rd party calibrators using FCINTF

scheduling

and .xls.

environments

ilable

ip

Time based schedule

A time based search engine quickly identifies devices due or overdue for calibration. This simple but powerful resource management tool helps plan routine calibration and outage maintenance.

Cal Date Query

Calibration Due Date between 21/06/2004 and 25/07/2004

Query Results: Unit 1 wk 26

TT-0105-J
 T1-0205-K2
 P1-0322-Z
 PIC-0555-J

Close

Field Calibration

GE Druck Portable documenting calibrators and 3rd party calibrators using the FCINTF protocol can be programmed with object lists and test procedures. In the field these routines will prompt the technician as to the settings and automatically record the results, promoting uniformity and eliminating human errors.

Communication

Druck 605 Calibrator
 Druck DPI 325 Calibrator
 Druck DPI 335 Calibrator
 Druck DPI 615 Calibrator
 Druck/Unomat MCX-II Calibrator
 Druck/Unomat TRX-II Calibrator

Port: COM1

Manual data entry

Calibrators and test equipment without serial communications, for example, deadweight testers, are supported with a manual data entry facility. Calibration results are entered as the test proceeds or alternatively results recorded from field calibrators can be entered later. This feature provides total compatibility with existing equipment and allows the full benefits of automated calibration to be realised at a later date as older equipment is replaced by documenting calibrators.

Manual Data Entry

Technician: Brian Graham Date: 25/05/2004

☐ As Found ☐ As Left

Nominal Input (bar)	Actual Input (bar)	Actual Output (mPa)
1 0.000	0	4.00
2 3.000	2.985	11.98
3 6.000	6.001	20.00
4 3.000	3.002	12.00
5 0.000	0	4.00

OK Cancel

Calibrator Info
 Manufacturer: Druck
 Model Number: DPI 601
 Serial Number: 1152/94-10
 Ambient Temperature: 17.8

Calibration Reports

The calibration certificates can be printed or exported in a clear logical format that complies with the requirements of quality approvals such as ISO9000. As Found and As Left results are detailed in numerical and graphical form including Pass/Fail status and important information about the device calibrated, the strategy, the calibrator used and the technician.

Calibration Report
Range 1

General

Tag: P1-0205-J Routine:
 Area: A10105-M Report Number: 2
 Hookup: D1-0205 Date of Calibration: 24/05/04 16:31:05
 Loop Diagram: D1-0205-1 Printed: 24/05/04 16:31:05
 Technician: Brian Graham Ambient Temp: 16.02 °C
 Work Order: Cal Serial Num: 115204-11
 Cal Model Num: DPI 601 Support module:

Instrument (FB-9555)

Model: P99-2x Error Calculation: 1/50m
 Serial Number: F1901 Pass/Fail Tolerance: 120/1/20m
 Input: 0.00 - 0.0102xG Output: 4.00 - 20.00mPa

Calibration Data

Cal Points	Setpoint	Reading	Error	Status
0.00	4.00	4.00	0.00	Pass
3.00	11.98	11.98	0.02	Pass
6.00	20.00	20.00	0.00	Pass
3.00	12.00	12.00	0.00	Pass
0.00	4.00	4.00	0.00	Pass

Comment:

Date: 24/05/04 16:31:05 Approved: Brian Graham

Intecal for Industry

Calibration Software for Portable Calibrators

CALIBRATION STANDARDS

Calibrators manufactured by GE Druck are calibrated against precision calibration equipment traceable to international standards.

RELATED PRODUCTS

Portable field calibrators

GE Druck manufacture a wide range of portable pressure, temperature and electrical field calibrators. A selection of these are shown below.



Laboratory and workshop instruments

GE Druck also manufacture a wide range of pressure indicators and controllers. This includes Pressuremets industrial deadweight testers and Ruska high precision controllers and primary standard piston gauges.

Pressure Transducers and transmitters

An extensive range of pressure transducers and transmitters are available, including the RTX and Smart/HART® STX process pressure transmitters.

Please refer to manufacturer for further information on related products.

Low Pressure Sensors LP 1000



Industrial Standard Transmitters PTX 7500



Rangeable Pressure Transmitters RTX 1000A/H



INTECAL FOR INDUSTRY SYSTEM REQUIREMENTS

OS Windows 98SE, 2000, ME, NT4 and XP
CPU Intel 486, 66MHz or greater (Pentium recommended)
Memory 16Mbyte or greater (32Mbyte recommended)
Hard Disc Space:
CD Install: 20Mbyte for Installation, then 10MByte for expanding database.
Download: As for CD plus 15Mbyte for temporary install files.

ORDERING INFORMATION

Please state the following:

1. S_781-013 Intecal 4 i.
2. Language, please confirm with factory representative for availability.

Supplied as CD ROM, Internet access required for Installation key.

Continuing development sometimes necessitates specification changes without notice.

INTECAL FOR INDUSTRY COMPATIBLE CALIBRATORS



- DPI 605 High Precision Portable Pressure Calibrator
 - 0.025% Rdg accuracy
 - -1 to 20 bar pneumatic pressure source
 - External ranges -1 to 700 bar
 - RS 232 interface
 - Temperature measurement to 200°C



- MCX-II High Precision Multifunction Calibrator
 - T/C's, RTD's, mA, mV/V, ohms, frequency
 - Pressure -1 to 350 bar
 - Switch testing
 - PCMCIA card and RS 232
 - Smart HART® communicator



- DPI 615 Series Portable Pressure Calibrators
 - Low pressure differential version
 - -1 to 20 bar pneumatic source
 - 0 to 400 hydraulic source
 - 0.025% F.S. accuracy
 - RS 232 interface



- TRX-II Portable Multifunction Calibrator
 - T/C's, RTD's, mA, mV/V, ohms, frequency
 - Pressure -1 to 700 bar
 - Switch testing
 - PCMCIA card and RS 232
 - Smart HART® communicator



- DPI 325 Series High Pressure Pneumatic Calibrator
 - 0.025% FS accuracy
 - Generates pneumatic pressures to 200 bar
 - Self contained rechargeable gas cylinder
 - RS 232 interface
 - Up to 11 sensors per instrument



- PC6-PRO Pressure Calibrator
 - Pressure measurement range -1 to 1000 bar
 - Voltage and current measurement and sourcing
 - Pressure to current or voltage conversion
 - Current or voltage to pressure conversion
 - Two wire transmitter simulation