

HTLS

PDS HTLS

Heat Tracing Line Sensing Control Panel

Series 8000/12000/24000

Features:

- Color Touchscreen Operator Panel
- Eight/Twelve/Twenty-Four Points of Independent Control
- NEMA 4/12 Enclosure
- High/Low Temperature Alarms
- Continuity Alarming
- Ground Fault Alarming/Trip
- Open Sensor Alarm
- Common Alarm Output
- Load Management
- Internal Power Distribution (Includes Circuit Breakers)
- 120, 240, and 277 Vac
- Global Programming
- Auto-Cycle Feature
- Current Display
- Failed Sensor Output Setting
- Loop Enable/Disable
- Hand/Off/Auto Selection
- Network Communications

Applications:

- Process Temperature Maintenance
- Freeze Protection
- Roof/Gutter De-Icing
- Tank and Vessel Heat Tracing
- Snow Melting
- Floor Heating
- Steam Condensate Return Systems
- Fire Protection Systems



OGDEN



Description

The IntelliTRACE HTLS Series is a microprocessor based control/monitoring and power management/distribution system for heat trace applications.

The IntelliTRACE 8, 12, 24 loop heat trace system provides alarms for high / low temperature, continuity, ground fault leakage, and sensor faults. The advanced features include a color touchscreen operator interface panel that provides simple programming with no keyboards or cryptic labels. The panel displays loop status, alarm conditions and graphics on process temperatures,

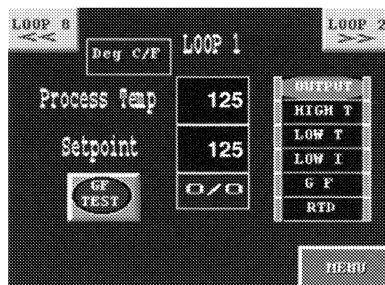
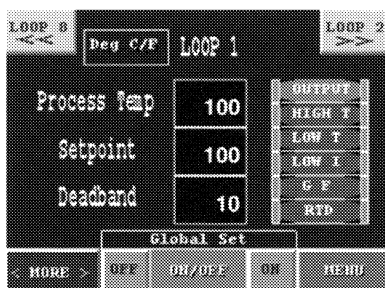
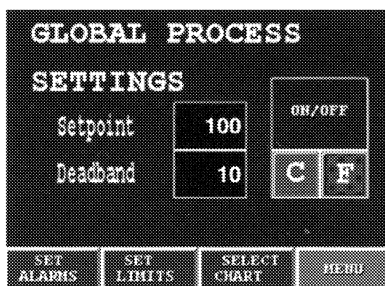
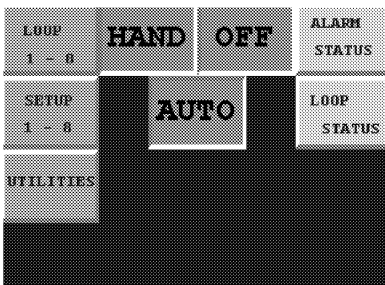
setpoints, and currents. Through the Global Programming feature, operator setup time is greatly reduced.

With the built-in power distribution, the IntelliTRACE multi-loop provides reduced material, installation, and maintenance costs. The load management feature eliminates the need for expensive ground fault breakers, limits inrush current and systematically interrogates all circuits for continuity, and ground fault leakage, sensor faults, and temperature alarms.

Technical Specifications

Supply Voltage:	120, 240, and 277Vac, Three-Phase
Operating Environment:	32-120°F (0-40°C)
Communications:	RS-485 MODBUS®
Input:	RTD 100 Ω Platinum Three-Wire.
Output:	Two-Pole Contactors
Maximum Current:	24 Amps/Ckt
Temperature Alarms:	High/Low 2°F Deadband Non-Latching
Ground Fault Alarm:	Adjustable 25-500 ma Factory Set @ 30 mA
Continuity Alarm:	< 2 amps Non-Latching.
Load Management:	15 sec. Non-Overlap to Reduce Inrush.
Auto-Cycle:	Programmable to 720 Hrs (30 days)
Failed Sensor Output Setting:	0-100%
Control Mode:	On/Off with adjustable Deadband

HTLS Series Line Sensing Heat Trace Panel



Advantages

Highest Value/ Lowest Installed Cost

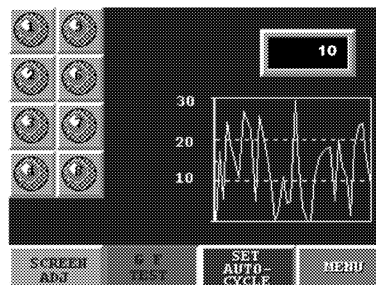
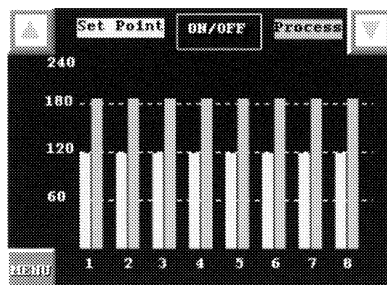
- Easy Retrofit into Existing Systems.
- Eliminates Ammeter Panels.
- Eliminates Signal Light Kits.
- Eliminates Monitor Wire Alarm Panels.
- Monitors Continuity without the use of Monitor Wire.
- Reduced Material and Installation Costs.
- Temperature/Monitor and Power Management / Distribution In One Package.
- Built-in GFI eliminates the need for separate Ground Fault Breakers.

Lowest Learning Curve

- Simple Color Touchscreen.
- Operator Panel (no Keyboards/no cryptic labels).

Reduced Maintenance/Troubleshooting Time/Cost

- Temperature/Monitor and Power Management in one Package.
- Periodic Auto-Test Function Checks Continuity, Alarms & GFI Status on each loop.
- Continuous Monitoring of Heat Trace Circuits.



HTLS Series Line Sensing Heat Trace Panel

Ordering Information

MODEL

HTLS IntelliTRACE 8000 Series Line Sensing Heat Trace Panel

Panel Configuration

cUL and UL Listed Eight Loop Line Sensing Temperature/Monitor Heat Trace Panel. Factory pre-wired for quick installation. Includes: Two-Pole Contactors, Current Transmitters, High/Low Temperature Alarms, On/Off Control, RTD Sensor Inputs, Ground Fault Indication or Shutdown, Common Alarm Output, Hand/Off/Auto, Loop Enable/Disable, Auto Cycle Feature, Color Touch Screen Programming, NEMA 4 rated Enclosure (36"H x 30"W x 8"D) for Indoor/Outdoor Applications. Options Include: Cabinet Heater, Type Z Purge System.

CODE Eight Independent Loops of Heat Trace Control

8

CODE Voltage

- 0 120 Vac (Includes Single Pole Circuit Breakers) 208Y/120 Vac Three Phase Four-Wire
- 1 240 Vac (Includes Double Pole Circuit Breakers) 240 Vac Three Phase
- 2 277 Vac (Includes Single Pole Circuit Breakers) 480Y/277 Vac Three-Phase Four-Wire
- 3 480 Vac (Includes Double Pole Circuit Breakers) 480Y/277 Vac Three-Phase

CODE Circuit Breaker Rating

- 1 15 Amp Thermal Magnetic
- 2 20 Amp Thermal Magnetic
- 3 30 Amp Thermal Magnetic

CODE Cabinet Heater

- 0 None
- 1 Thermostat Controlled Enclosure Heater

CODE Pressurization Control System

- 0 None
- 1 Type Z for Class I Division II Hazardous Location

HTLS 8 0 1 0 0 Typical Model Number

HTLS Series Line Sensing Heat Trace Panel

Ordering Information

MODEL

HTLS IntelliTRACE 12000 Series Line Sensing Heat Trace Panel

Panel Configuration

cUL and UL Listed Twelve Loop Line Sensing Temperature/Monitor Heat Trace Panel. Factory pre-wired for quick installation. Includes: Two-Pole Contactors, Current Transmitters, High/Low Temperature Alarms, On/Off Control, RTD Sensor Inputs, Ground Fault Indication or Shutdown, Common Alarm Output, Hand/Off/Auto, Loop Enable/Disable, Auto Cycle Feature, Color Touch Screen Programming, NEMA 4 rated Enclosure (48"H x 36"W x 10"D) for Indoor/Outdoor Applications. Options Include: Cabinet Heater, Type Z Purge System.

CODE Twelve Independent Loops of Heat Trace Control

12

CODE Voltage

0	120 Vac (Includes Single Pole Circuit Breakers) 208Y/120 Vac Three Phase Four-Wire
1	240 Vac (Includes Double Pole Circuit Breakers) 240 Vac Three Phase
2	277 Vac (Includes Single Pole Circuit Breakers) 480Y/277 Vac Three-Phase Four-Wire
3	480 Vac (Includes Double Pole Circuit Breakers) 480Y/277 Vac Three-Phase

CODE Circuit Breaker Rating

1	15 Amp Thermal Magnetic
2	20 Amp Thermal Magnetic
3	30 Amp Thermal Magnetic

CODE Cabinet Heater

0	None
1	Thermostat Controlled Enclosure Heater

CODE Pressurization Control System

0	None
1	Type Z for Class I Division II Hazardous Location

HTLS 12 0 1 0 0 Typical Model Number

HTLS Series Line Sensing Heat Trace Panel

Ordering Information

MODEL

HTLS IntelliTRACE 24000 Series Line Sensing Heat Trace Panel

Panel Configuration

cUL and UL Listed Twenty-Four Loop Line Sensing Temperature/Monitor Heat Trace Panel. Factory pre-wired for quick installation. Includes: Two-Pole Contactors, Current Transmitters, Ground Fault Indication or Shutdown, Continuity Alarms, Common Alarm Output, Loop Enable/Disable, Hand/Off/Auto, Auto Cycle Feature, Thermal Magnetic Circuit Breakers, Color Touch Screen Programming, NEMA 4 rated Enclosure (62"H x 30"W x 8"D) for Indoor/Outdoor Applications. Options Include: Cabinet Heater, Type Z Purge System.

CODE Twenty-Four Independent Loops of Heat Trace Control

24

CODE Voltage

0	120 Vac (Includes Single Pole Circuit Breakers) 208Y/120 Vac Three Phase Four-Wire
1	240 Vac (Includes Double Pole Circuit Breakers) 240 Vac Three Phase
2	277 Vac (Includes Single Pole Circuit Breakers) 480Y/277 Vac Three-Phase Four-Wire
3	480 Vac (Includes Double Pole Circuit Breakers) 480Y/277 Vac Three-Phase

CODE Circuit Breaker Rating

1	15 Amp Thermal Magnetic
2	20 Amp Thermal Magnetic
3	30 Amp Thermal Magnetic

CODE Cabinet Heater

0	None
1	Thermostat Controlled Enclosure Heater

CODE Pressurization Control System

0	None
1	Type Z for Class I Division II Hazardous Location
2	1603-11030

HTLS 24 0 1 0 0 Typical Model Number

HTLS Series Line Sensing Heat Trace Panel

WARRANTY AND LIMITATION OF REMEDY AND LIABILITY

Ogden warrants only that the Products and parts by Ogden, when shipped and the work performed by Ogden when performed, will meet all applicable specification and other specific product and work requirements (including those of performance), if any, and will be free from defects in material and workmanship under normal condition of use. All claims for defective or nonconforming (both hereinafter called defective) Products, parts or work under this warranty must be made in writing immediately upon discovery, and in any event, within one (1) year from delivery, provided, however all claims for defective Products and parts must be made in writing no later than eighteen (18) months after shipment by Ogden. Defective and nonconforming items must be held for Ogden's inspections and returned to the original f.o.b. point upon request. THE FOREGOING IS EXPRESSLY IN LIEU OF ALL OTHER WARRANTIES WHATSOEVER EXPRESS, IMPLIED AND STATUTORY, INCLUDING, WITHOUT LIMITATION, THE IMPLIED WARRANTIES OF MERCHANTABILITY AND FITNESS FOR A PARTICULAR PURPOSE.

Notwithstanding the provisions of this WARRANTY AND LIMITATION Clause, it is specifically understood that Products and parts not manufactured and work not performed by Ogden are warranted only to the extent and in the manner that the same are warranted to Ogden by Ogden's vendors, and then only to the extent that Ogden is reasonably able to enforce such warranty, it being

understood Ogden shall have no obligation to initiate litigation unless Buyer undertakes to pay all expenses therefor, including but limited to attorney's fees, and indemnifies Ogden against any liability to Ogden's vendors arising out of such litigation.

THE FOREGOING IS OGDEN'S ONLY OBLIGATION AND BUYERS EXCLUSIVE REMEDY FOR BREACH OF WARRANTY, AND IS BUYERS EXCLUSIVE REMEDY AGAINST OGDEN FOR ALL CLAIMS ARISING HERE UNDER OR RELATING HERETO WHETHER SUCH CLAIMS ARE BASED ON BREACH OF CONTRACT, TORT (INCLUDING NEGLIGENCE AND STRICT LIABILITY) OR OTHER THEORIES, BUYERS FAILURE TO SUBMIT A CLAIM AS PROVIDED ABOVE SHALL SPECIFICALLY WAIVE ALL CLAIMS FOR DAMAGES OR OTHER RELIEF, INCLUDING BUT NOT LIMITED TO CLAIMS BASED ON LATENT DEFECTS. IN NO EVENT SHALL BUYER BE ENTITLED TO INCIDENTAL, OR CONSEQUENTIAL DAMAGES AND BUYER SHALL HOLD OGDEN HARMLESS THEREFROM ANY ACTION BY BUYER ARISING HERE UNDER OR RELATING HERETO, WHETHER BASED ON BREACH OF CONTRACT, TORT (INCLUDING NEGLIGENCE AND STRICT LIABILITY) OR OTHER THEORIES, MUST BE COMMENCED WITHIN ONE (1) YEAR AFTER THE DATE OF SHIPMENT OR IT SHALL BE BARRED.

W2008M