



New Data Logging Available on DPI8XX Series

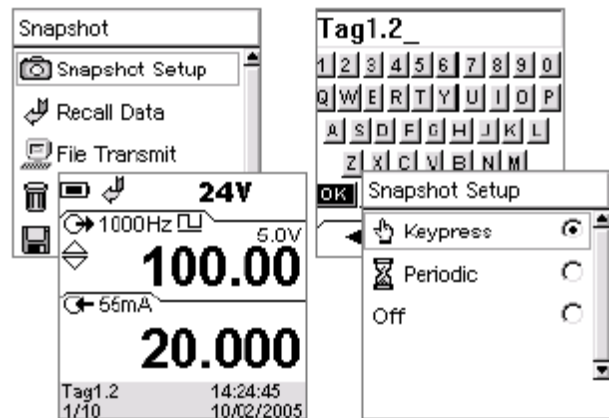
Introduction

The data logging feature is supplied as an upgrade kit (option I0800E on the datasheets). This feature is standard with the DPI 820 and is now available as an option for all other DPI8XX models. Existing units with firmware version 5 or higher can be upgraded in the field. The data logging function contains a release key, RS232 lead and user guide.



Data Logging Release Key

This powerful tool allows up to 1000 screen values to be recorded in non-volatile memory for later on-screen recall, upload to PC or output to printer. Important values can be recorded during a test or logged automatically to capture system and environmental performance over time.



Snapshot of Screen Displays

Data logging features include:

- Real time clock, time and date stamped
- Automatic logging
- Manual logging (key press)
- On site data review
- Six character data header
- PC compatible for uploading data

Model	820		
Serial No	8200000001		
Calibration due	01/01/2004		
Tag	H2O-1		
Task Id	110		
T1 in			
Date	Time	°C K T1	
08/07/2004	12:06:44	27.6	
08/07/2004	12:06:46	27.2	
Tag	B145		
Task Id	164		
T1 In	Tare On		
T2 In	Filter On	Tare On	
Date	Time	°C K T1	°C K T2
08/07/2004	14:41:36	32.5	32.4
08/07/2004	14:41:38	32.5	32.4
08/07/2004	14:41:41	32.4	32.5

Contents of Snapshot Data